

## School of Sciences

**MSc in Atmospheric and Climate Sciences (Full time day)**(Location: Nyarugenge Campus) Duration: 2 Years

**Entry requirements**

Bachelor degree in Physical Sciences with a cumulative average of at least 60

**MSc in Applied Mathematics (Full time day)** (Location: Nyarugenge Campus) Duration: 2 Years

**Entry requirements**

Bachelor degree with honors in Mathematics and Physics

**MSc in Environmental Chemistry (Full time day)** (Location: Nyarugenge Campus) Duration: 2 Years

**Entry requirements**

Bachelor degree in chemistry, pharmacy, agriculture (soil analysis), food sciences and biochemistry

**MSc in Biodiversity Conservation and Natural resources Management (Full time day)** Location: Nyarugenge Campus) Duration 2 Years

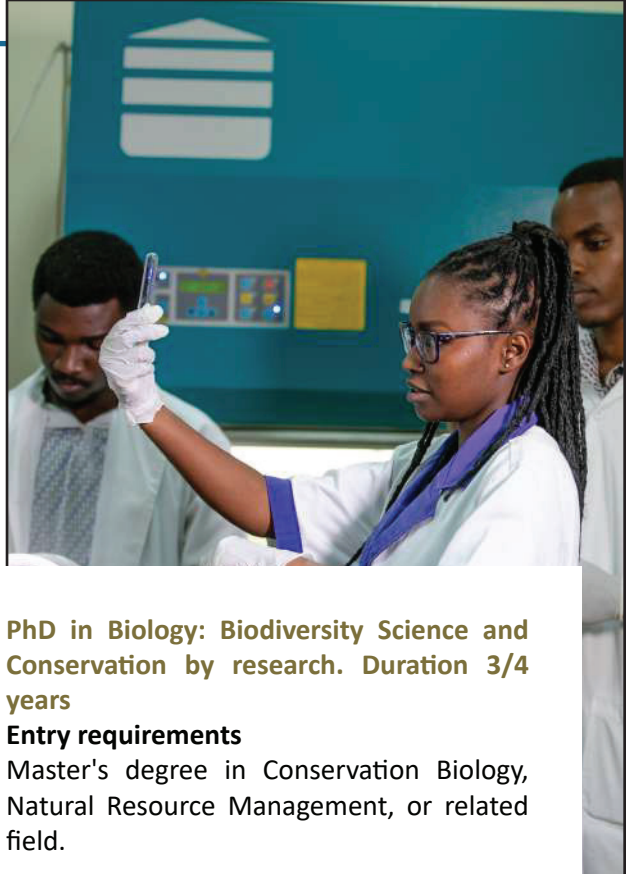
**Entry requirements**

Bachelor degree in the field of Biology (Botany and Conservation; Zoology and Conservation), Agriculture, wildlife management, or any other related field of nature conservation

**PhD in Biology: (Biotechnology, Microbiology, Biochemistry) by research and dissertation/thesis**Duration: 3-4 years

**Entry requirements**

MSc in Biological Sciences or equivalent



**PhD in Biology: Biodiversity Science and Conservation by research.** Duration 3/4 years

**Entry requirements**

Master's degree in Conservation Biology, Natural Resource Management, or related field.

**PhD in Chemistry: (organic Chemistry, Environmental Chemistry, Physical Chemistry, Inorganic Chemistry) by research and dissertation/thesis** Duration: 3- 4 years

**Entry requirements**

MSc in Chemistry or Equivalent

**PhD in Physics by research and dissertation/ thesis** Duration: 3- 4 years

**Entry requirements**

MSc in Physical sciences and MSc in Applied Mathematics

**PhD in Mathematics (Pure Mathematics, Applied Mathematics, &Statistics) Fulltime day by coursework and dissertation** (Location: Nyarugenge Campus) Duration: 4-5 years

**Entry requirements**

MSc in Mathematics

**PhD in Physics by research and dissertation/  
thesis Duration: 3-4 years**

**Entry requirements**

MSc in Physical sciences and MSc in Applied mathematics

**Entry requirements**

Bachelor degree in Computer Science or any related field

**PhD by Research in ICT: software engineering,  
computer science by Research (Location:  
Nyarugenge Campus) Duration: Four years**

**Entry requirements**

MSc in any of engineering or ICT

## School of ICT

**MSc in Information Systems Duration: Two  
years (Location: Nyarugenge Campus)  
Option**

- E-governance -blended mode (online and on-campus)
- Internet technologies Full time (day)

**Entry requirements**

Bachelor degree in Computer Science or any related field

**MSc in Information and Communication  
Technologies (operational communications)  
Full time (day) (Location: Nyarugenge  
Campus) Duration: Two years**

**Entry requirements**

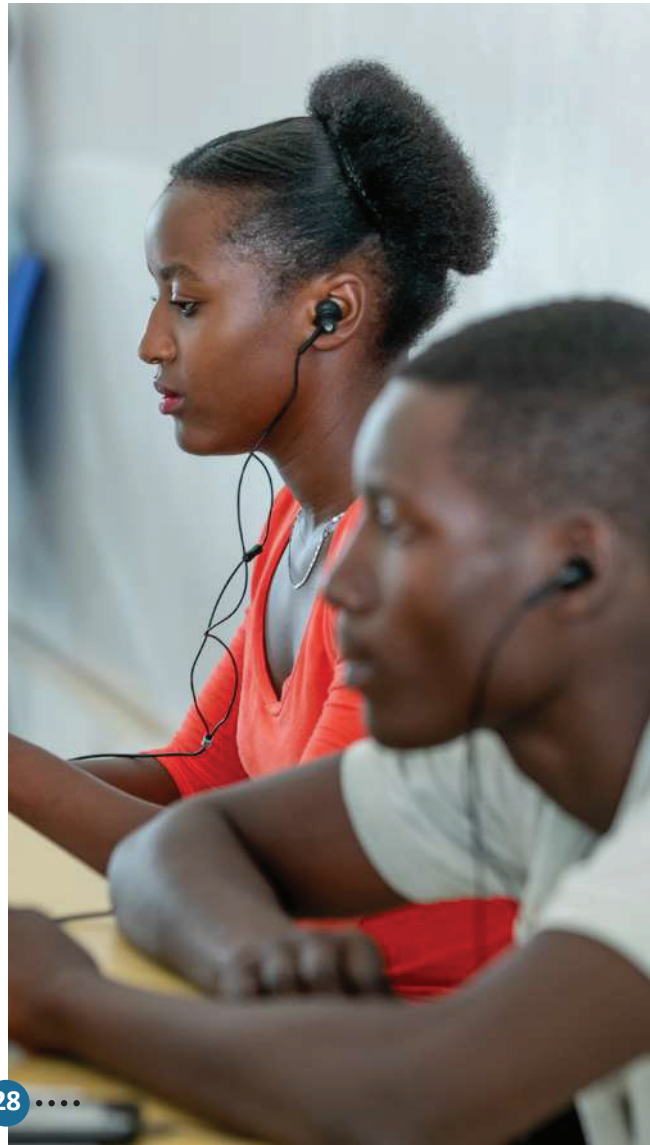
Bachelor degree in Computer Science or any related field

**MSc in Computer Science (option: Software  
Engineering) Full time (day)  
(Location: Nyarugenge Campus) Duration:  
Two years**

**Entry requirements**

Bachelor degree in Computer Science or any related field

**MSc in Communications Management by  
e-learning (eMCM) (eLearning)  
(Location: Nyarugenge Campus) Duration:  
Two years**



## School of Engineering

**Master of Science in Transportation Engineering and Economics Full time (day)** (Location: Nyarugenge Campus) Duration: 2 years

### Entry requirements

Bachelor degree in Civil engineering or any related field

**Master of Science in Highway Engineering and Management (Full time day by coursework and dissertation)** (Location: Nyarugenge Campus) Duration: 2 years

### Entry requirements

Bachelor of Science in civil engineering

**Master of Science in Water resources and Environmental Management (Full time day by coursework and dissertation)** (Location: Nyarugenge Campus) Duration: Two years

### Entry requirements

A Bachelor degree in Civil Engineering or any related field

**PhD in environmental engineering (Full time, by research publication and dissertation/thesis)** Duration: 3-4years

### Entry requirements

MSc in environmental engineering or any MSc related to the field

**PhD in Highway Engineering (Full time, by research publication and dissertation/thesis)**Duration: 3-4 years

### Entry requirements

MSc in Highway engineering or related field

**PhD in Water Resource Engineering (Full time, by research publication and dissertation/thesis)** Duration: 3-4 Years

### Entry requirements

MSc in water resource Engineering or related field

## School of Architecture and Built Environment

**MSc in Geo-Information Science for Environment & Sustainable Development (Full time week-end)** (Location: Nyarugenge Campus) Duration: Two years

### Entry requirements

Bachelor degree in geography, agriculture, biology, chemistry civil engineering, environmental engineering, Mining and Geology, and other related fields



## African Centre of Excellence in Internet of Things (ACE IoT)

-Minimum of Second Class Upper division ( $\geq 70\%$ ) or equivalent at the Bachelor's level.

**MSc in Internet of Things: Embedded Computing Systems (MSc in IoT: ECS) Full time (day) (Location: Nyarugenge Campus) Duration: Two years**

### Entry requirements

Bachelor degree in Engineering/Technology (Computer Engineering, Computer Science, Information Technology, Electrical Engineering, Electronics and Communications Engineering) or equivalent from any recognized Institution

**MSc in IoT: Wireless Intelligent Sensor Networking (MSc in IoT: WISeNet) Full time (day) (Location: Nyarugenge Campus) Duration: Two years**

### Entry requirements

Bachelor degree in Engineering/Technology (Computer Engineering, Computer Science, Information Technology, Electrical Engineering, Electronics and Communications Engineering)

**PhD by Research in IoT: Embedded Computing systems: Full time Location: Nyarugenge Campus Duration: 4 years**

**PhD by Research in IoT: Wireless Intelligent sensor Networking Full time programme: Location: Nyarugenge Campus Duration: 4 years**

### Entry requirements

MSc degree Engineering/Technology (Computer Engineering, Computer Science, Information Technology, Electrical Engineering, Electronics and Communications Engineering)





## African Centre of Excellence in Energy for Sustainable Development (ACE ESD)

**MSc in Electrical Power Systems Full time (day)**  
(Location: Nyarugenge Campus) Duration:  
Two years

### Entry requirements

Bachelor degree in Mechatronics, Mechanical Engineering, Electrical Engineering, and Electro-Mechanical Engineering or Renewable Energy Engineering or other related fields

**MSc in Renewable energy Full time (day)**  
(Location: Nyarugenge Campus) Duration:  
Two years

### Entry requirements

Bachelor degree in Mechatronics, Mechanical Engineering, Electrical Engineering, Electro-Mechanical Engineering, Energy Engineering or Renewable Energy Engineering or other related fields

**MSc in Energy Economics Full time (day)**  
(Location: Nyarugenge Campus) Duration:  
Two years

### Entry requirements

Bachelor degree in Economics, accountant, Statistics, Engineering, Agricultural Economics, Quantitative Economics, Finance, or related fields

**PhD in Renewable Energy**

**PhD in Electrical Power Systems**

**PhD in Energy Economics; Full time, by research publication and dissertation/thesis**  
(Location: Nyarugenge Campus) Duration:  
Four years



### Entry requirements

MSc (or Equivalent ) degree in the field related to energy, electrical engineering , mechanical engineering, physics and material sciences, energy economics, economics and policy, energy economics and finance and regulations

## International Centre for Theoretical Physics (ICTP/EAIFR)

**MSc in Physics (Specializations: High Energy Physics, Condensed Matter Physics, Solid Earth Geophysics) Full time coursework and a final thesis is at the end of the second year (Location: Nyarugenge Campus) Duration: Two years**

### Entry requirements

Bachelor degree with honors in Physics or Mathematics with distinction

**PhD in Physics (High Energy Physics, Condensed Matter Physics, Solid Earth Geophysics) By Research and dissertation/thesis (Location: Nyarugenge Campus) Duration: Four years**

### Entry requirements

MSc in physics, mathematics, or a related field

## Regional Centre of Excellence in Biomedical Engineering and E-Health

**MSc in Health Informatics (Full time-day) (Location: Remera Campus) Duration: Two years**

### Entry requirements

- BSc in any of the following fields:
  1. Health Sciences
  2. Nursing
  3. ICT
- Proficiency in the English Language

**Msc in Biomedical Engineering (Full time - day) (Location: Nyarugenge Campus) Duration: 2 years**

### Entry Requirements

Biomedical Engineering, Mechatronics, Mechanical Engineering, Electrical and Electronics Engineering, Electro-Mechanical Engineering and Computer Engineering

**Msc in Rehabilitation and Mobility Sciences (Full time - day) (Location: Remera Campus) Duration: 2 years**

### Entry Requirements

Prosthetics and orthotics, physiotherapy, occupational therapy and general medicine

